



Glasbhealach Corcaigh go Cionn tSáile Cork to Kinsale Greenway



Tionscadal Éireann
Project Ireland
2040

Public Consultation No. 2 **Proposed Options** 6th September – 13th October 2024



INTRODUCTION

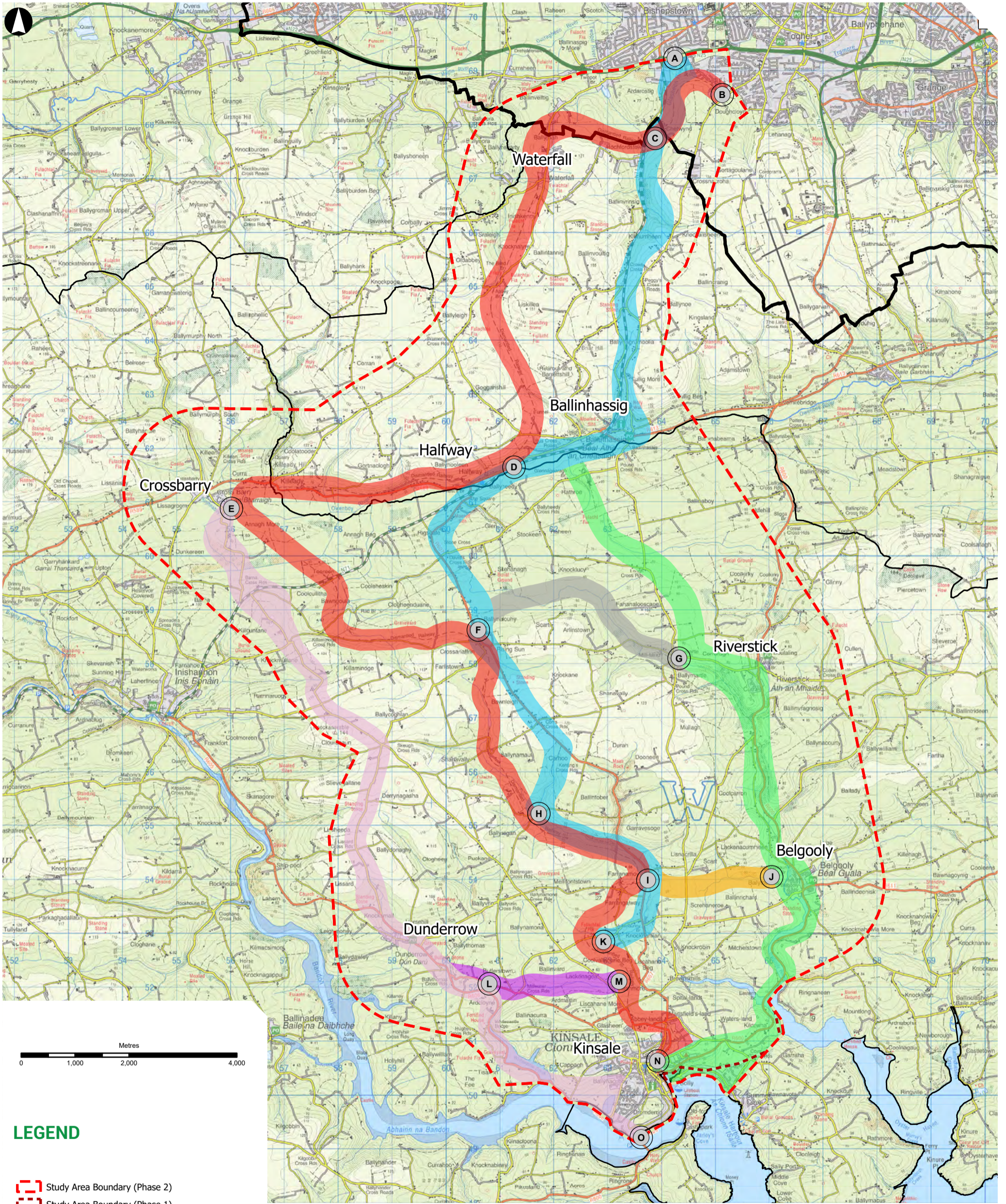
Cork County Council are in the early stages of developing the Cork to Kinsale Greenway. This project which is funded by Transport Infrastructure Ireland (TII), will provide a Greenway between Cork City and Kinsale. Arup has been appointed by Cork County Council to provide multi-disciplinary engineering and other specialist consultancy services to progress the project through the design process, following the Phase 1-4 of the TII Project Management Guidelines. Phase 1 of the project is now complete, and Phase 2 is currently underway.

PROJECT BACKGROUND

The Cork to Kinsale project will link and improve accessibility to several points of interest along the route, potentially including the refurbishment of Chetywnd Viaduct and Ballinhassig Tunnel. Phase 0 identified a need to link two important destinations, Kinsale and Cork City via a corridor for non-motorised journeys. Phase 1 identified a number of options which were assessed under the criteria Engineering, Environment and Economy. The assessment of the shortlisted options confirmed that there is more than one feasible Corridor Option within the Study Area. Going forward this project will build on work done in Phase 0 and 1 to formally appraise all viable options that would provide a greenway linking the two destinations. Consideration will be given to the constraints and opportunities of the various options to ensure that the emerging preferred option represents the best solution.



PHASE 2 CORRIDOR OPTIONS



DISCLAIMER NOTES:

The Corridors shown may be subject to change. More detailed assessments, on-going studies and the information received from the public may result in changes to the Corridors displayed and Proposed Study Area. The corridors are generally 400m wide but vary in certain areas due to notable constraints and opportunities. The corridors shown do not represent the lands required for a Greenway, they represent the lands for which a Greenway is feasible.

LEGEND

- Study Area Boundary (Phase 2)
- Study Area Boundary (Phase 1)
- Possible Corridor Switchover Nodes (Phase 2)
- Grey
- Blue
- Green
- Orange
- Pink
- Purple
- Red
- Cork City Boundary
- Cork County Municipal Districts Boundary

WHAT'S HAPPENING NOW

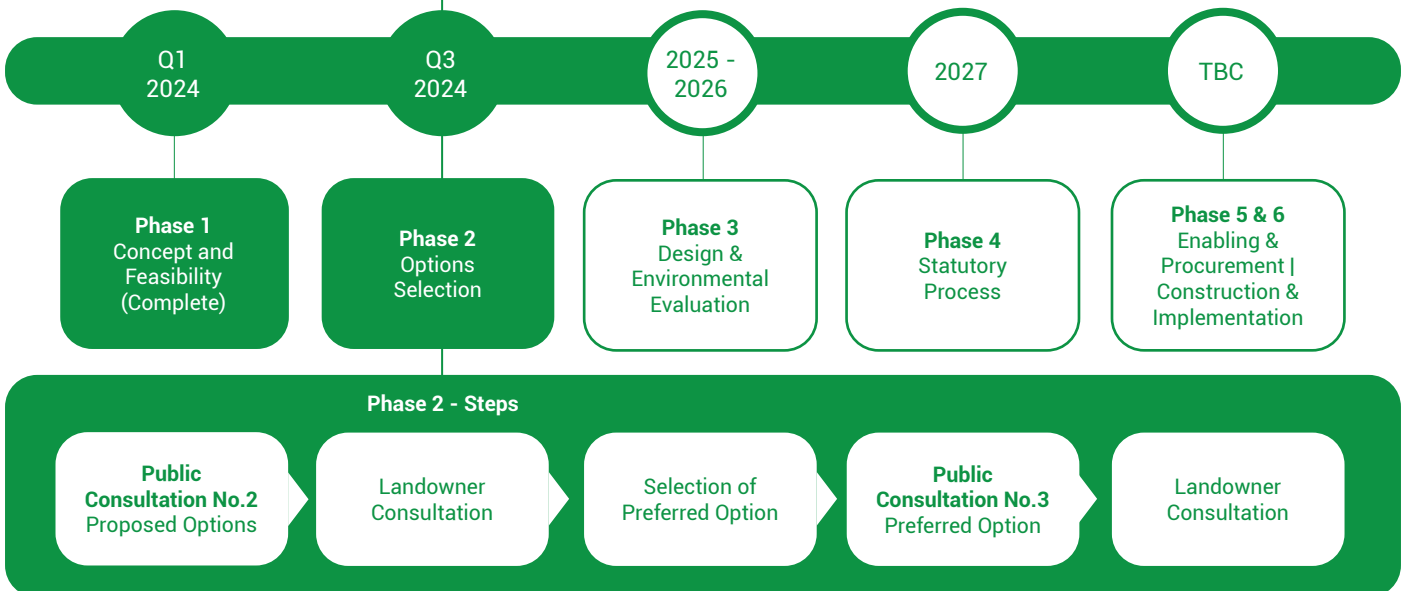
This project is currently at Phase 2 Options Selection. The purpose of Phase 2 is to examine potential route corridor options to determine a preferred route corridor option. During Phase 2 all reasonable / feasible route corridor options are examined and their costs, benefits and effects on the environment are interrogated to identify a preferred route corridor option. Once/ if a preferred route is identified and subject to TII approval, the project will progress to Phase 3 Design and Environmental Evaluation.

Public Consultation No.2 on the Corridor Options will take place between 6th September and 13 October 2024. This consultation is being held online through a project website which contains all the information that will be displayed at the in-person public consultation events. The feedback from this consultation will be instrumental in identifying a preferred route corridor for the project. Public consultation remains a crucial part of advancing the development of an appropriate solution, and we continue to value the public's input and engagement.

PROJECT TIMELINE



You are here



PUBLIC CONSULTATION FEEDBACK

Feedback forms are available on the project website www.corkkinsalegreenway.ie and copies will also be available at the in-person Public Consultation events. Feedback can be submitted in the following ways.



Complete
Online

www.corkkinsalegreenway.ie



Return by
Email

corkkinsalegreenway@corkrdo.ie



Post

Cork National Roads Office

Cork County Council
Richmond
Glanmire
Cork
T45 WA44

**The closing date for submissions is
13th October 2024.**